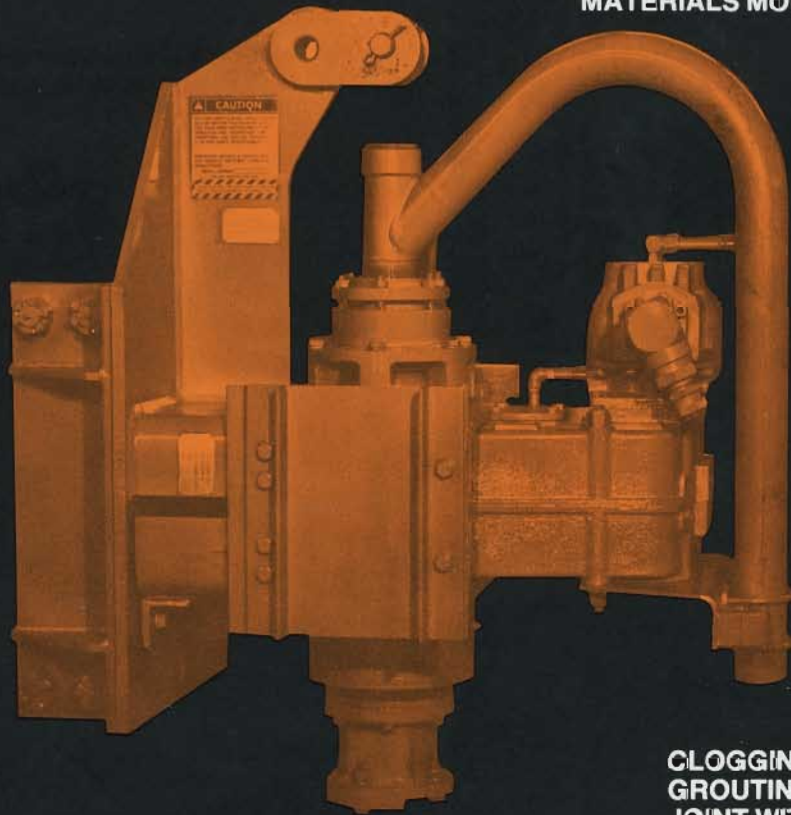




H-1200 VERTICAL EARTH AUGER

**DESIGN FLEXIBILITY. ADAPTABLE
TO FLANGE, HEX OR API THREAD
TYPE AUGER CONNECTIONS. FIT
STANDARD 26 INCH LEAD OR WITH
ROLLER BASE, 14 INCH H-BEAM.**

**BIG HYDRAULIC TORQUE. UP TO
12,000 FT. LBS. HANDLES TOUGH
MATERIALS MORE EASILY.**

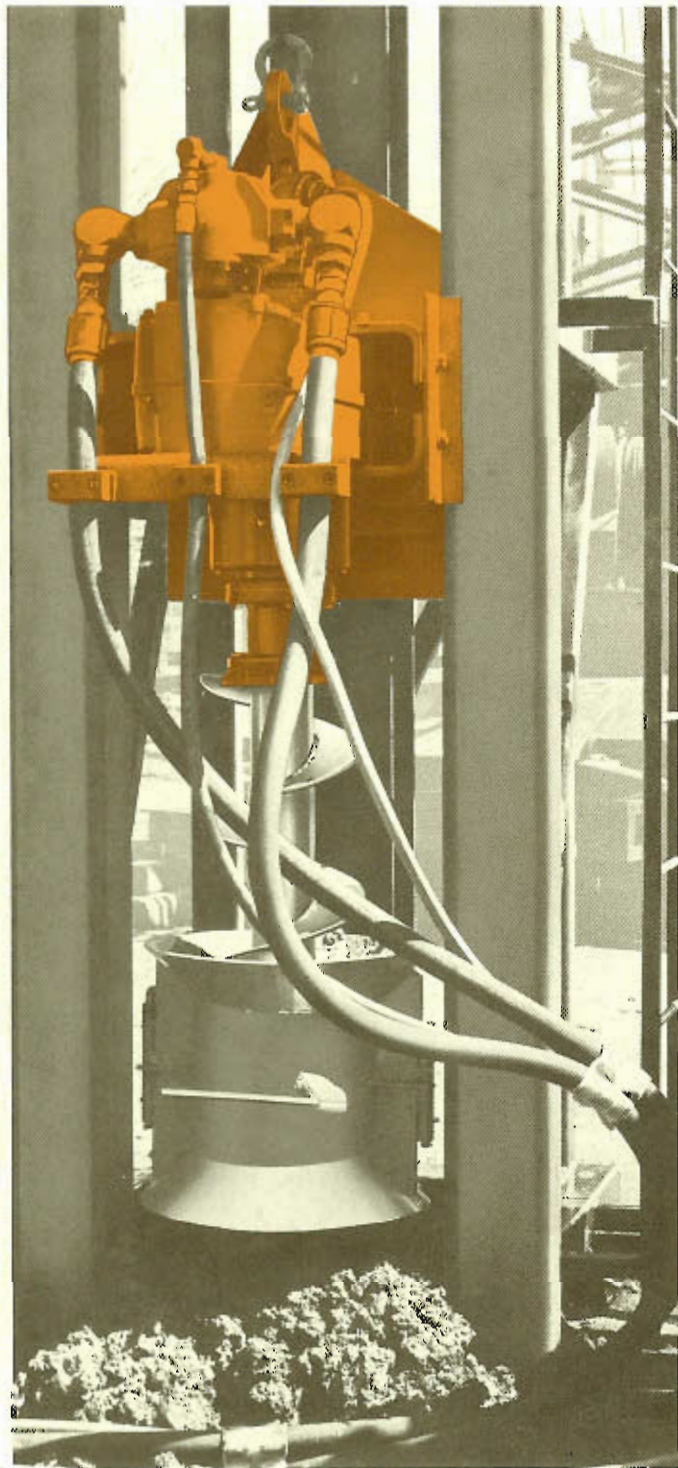


**CLOGGING REDUCED WHEN
GROUTING BY BUILT-IN ROTARY
JOINT WITH 3 INCH I.D. KEEPS
GROUT FLOWING.**

**RUGGED DESIGN AND CONSTRUCTION
ASSURES RELIABLE PERFORMANCE
EVEN IN TOUGHEST CONDITIONS.**

VERTICAL EARTH AUGER

H-1200



DESIGNED FOR HIGH PRODUCTION

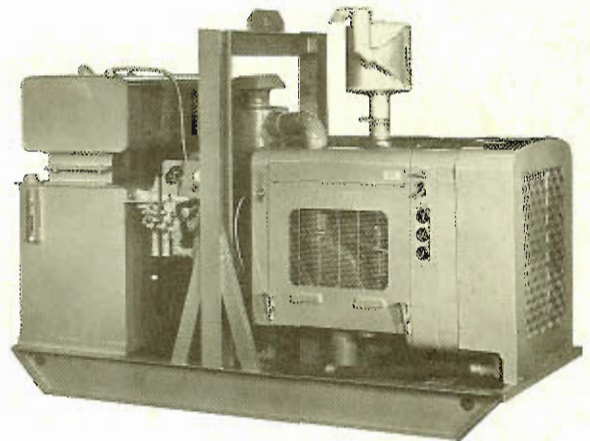
Preboring for pile or installing augered-in grout pile, the hydraulically powered H-1200 boring unit is designed to meet the production demands imposed on the modern drilling contractor.

REDUCED CLOGGING

With a 3 inch through-opening from inlet to auger stem, the H-1200's built in rotary joint can handle many materials that would clog other machines. Standard on H-1200.

POWER PACKS

Hydraulic power packs are available from MKT to operate the H-1200. Additional information on request.



OPERATING DATA

Model	H-1200
Torque 12,000 Ft. Lbs.	1659 kg-m
Auger RPM	34
Operating Pressure 2,500psi	176 kg/cm ²
Flow 64 GPM	242 l/m
Weight 1,900 Lbs.	862 kg.

DISTRIBUTED BY:

MKT[®]
GEOTECHNICAL
SYSTEMS

100 RICHARDS AVENUE
BOX 793, DOVER, NJ 07801